



TWIN GLOBAL 2018 | SEPTEMBER 25-27

# HORIZONS

Re-Envisioning Business,  
Society & Self in the 21<sup>st</sup> Century



TWIN GLOBAL 2018 GUIDEBOX IN COLLABORATION WITH  
EXPO CHICAGO AND PACE GALLERY NYC.

WANDERER ABOVE THE SEA OF FOG (C. 1818)  
CASPAR DAVID FRIEDRICH  
HAMBURGER KUNSTHALLE  
HAMBURG, GERMANY

“The world is idea.”

— Arthur Schopenhauer





THE CHAUVET-PONT-D'ARC CAVE (C. 30,000 B.C.)  
ARDÈCHE DEPARTMENT OF SOUTHERN FRANCE

## WELCOME

**At TWIN Global 2018 we endeavor to enable your missions as you do ours—building a truly global community of trust.**

Where we look inclines and circumscribes what threats and opportunities we discover. Day-to-day concerns compel myopia. It takes discipline to step back, look far and select paths to futures we desire. At TWIN Global 2018, we'll explore horizons from the edges of Earth and beyond, to our distant past and far futures.

The first two images in this year's TWIN GuideBox offer both vessels and anchors for our journey. Casper David Friedrich's *Wanderer* presents an individual atop a summit surveying the distance in time and space. Emblematic of the Romantic Era, and one of my favorite images, the piece for me embodies humanity's drive to explore, create, scale, even conquer, in context of far more beyond our control. The enormity of the space surrounding the protagonist—perhaps ourselves—suggests our insignificance against the powers of nature and the need for humility and reverence.

The image from the Chauvet Cave, site of the oldest known cave paintings, reflects for me a moment the lights of awareness and self-reflection intensified in our ancestors. Who was the first individual—and at origin it was an individual—who lifted charcoal or ochre to form an image

of the world, reflective, idealized, defining and affirming the self in context of a wider universe?

Beyond—also within—any sightlines, far more looms indeterminate, intriguing, compelling, even terrifying. Until our final moment, we can expect that past current horizons lie many more. It is our choice and challenge to remain aware and navigate as best we can.

We aspire that here at TWIN Global you'll advance your journeys in satisfying, invigorating, perhaps unexpected ways. Blessings for your expedition these few days and beyond.

To the Future,

**Robert C. Wolcott**  
*Co-Founder & Chairman*  
The World Innovation Network (TWIN)







FOAM (C. 2013)  
**KOHEI NAWA**  
COURTESY PACE GALLERY  
INSTALLATION VIEW, AICHI TRIENNALE 2013, AICHI  
PHOTO: NOBUTADA OMOTE | SANDWICH

## THANK YOU TO OUR SPONSORS

### FORESIGHT PARTNERS



### PROGRAM PARTNER







MAINE COAST (C. 1896)  
**WINSLOW HOMER**  
METROPOLITAN MUSEUM OF ART  
NEW YORK CITY

THANK YOU TO OUR SPONSORS

INSIGHT SPONSORS



MISSION PARTNERS







SAVANNAH, GEORGIA, NO. 2 (C. 1866)  
**GEORGE N. BARNARD**  
METROPOLITAN MUSEUM OF ART  
NEW YORK CITY

THANK YOU TO OUR SPONSORS

TEAM SPONSORS







THE AMERICAN SCHOOL (1765)  
**MATTHEW PRATT**  
METROPOLITAN MUSEUM OF ART  
NEW YORK CITY

## BOARD MEMBERS



**ROBERT C. WOLCOTT**  
**Co-Founder & Chairman**  
TWIN  
**Managing Partner**  
Clareo



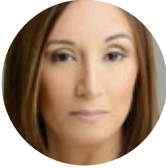
**ANNA CATALANO**  
**Independent Director**  
Willis Towers Watson  
HollyFrontier  
Kraton Corporation  
Alzheimer's Association



**LEE SHAPIRO**  
**Co-founder and Managing Partner**  
7wireVentures



**PETER BRYANT**  
**Managing Partner**  
Clareo  
**Board Chair**  
DPI



**JOCELYN CORTEZ YOUNG**  
**Managing Partner**  
Minerva Capital Group



**HOWARD A. TULLMAN**  
Illinois Institute of Technology  
**University Professor and Executive Director**  
Kaplan Institute  
**General Managing Partner**  
G2T3V, LLC  
Chicago High-Tech Investment Partners



**KAARINA KOSKENALUSTA**  
**Partner/Shareholder**  
SandPointe Asset Management, LLC  
**Partner**  
Global Initiatives Partners, LLC







CHILDREN ON THE BEACH (C. 1884)  
**MARY CASSATT**  
NATIONAL GALLERY OF ART  
WASHINGTON, D.C.

**“Civilization must be judged and prized,  
not by the amount of power it has developed,  
but by how much it has evolved and given  
expression to, by its laws and institutions,  
the love of humanity.”**

—Rabindranath Tagore







TILE PANEL (FIRST QUARTER 17TH CENTURY)  
SAFAVID-PERIOD ISFAHAN, IRAN

# CHALLENGE SESSION

## Automation & the Future of Work

The Future of Work session will explore the rapidly changing landscape of work given the proliferation of automation and the democratization of work.

We will discuss the organizational transformation imperative and the evolving role of various stakeholders including government, society, labor market intermediaries, education and NGOs. This interactive session will discuss the emerging decision making frameworks, develop a manifesto and a series of action steps.

PARTICIPANTS INCLUDE:

**JOHN BREMEN**  
Managing Director  
Willis Towers Watson

**SUMEET BHATIA**  
Head of Innovation  
Zurich NA

**GARY BOLLES**  
Partner  
Charrette LLC  
Chair, Future of Work  
Singularity University

**CHRIS GEBHARDT**  
CEO  
Stir Strategy and Story

**RAVIN JESUTHASAN**  
Author and Managing Director  
Willis Towers Watson

SESSION DESIGNERS:

**RAVIN JESUTHASAN**  
**GARY BOLLES**  
**CHRIS GEBHARDT**

LEAD SPONSOR



SUPPORTING SPONSOR





# Rafael Lozano-Hemmer

## Solar Equation Relational Architecture 16 (2010) PACE

SOLAR EQUATION RELATIONAL ARCHITECTURE 16 (C. 2010)  
**RAFAEL LOZANO-HEMMER**  
PACE GALLERY  
NEW YORK CITY

## CHALLENGE SESSION

The Future of Mobility—Electric,  
Autonomous and Shared

**Advances in technology and business models for electric vehicles, autonomous vehicles and ride hailing services have the promise to redefine mobility for people and goods worldwide.**

Yet many challenges remain on the road to new mobility—from consumer and commercial fleet acceptance, to states and cities concerned about consequences, to electric utilities seeking to anticipate and respond to impacts on the grid. This TWIN Challenge Session, sponsored by Exelon with support from Bosch, charts paths forward, encouraging greater collaboration across stakeholders.

### PARTICIPANTS INCLUDE:

**JOHN KWANT**  
Vice President, City Solutions  
Ford Motor Company

**SUNNY ELEBUA**  
Vice President, Corporate Strategy  
Exelon

**SERGEJ MAHNOVSKI**  
Director, Growth and Innovation  
Edison International

**MATT PETERSEN**  
President and CEO  
Los Angeles Cleantech Incubator

**MARK WERWATH**  
Clinical Associate Professor  
Northwestern University

### LEAD FACILITATOR:

**PAUL DONNELLAN**  
Partner  
Clareo

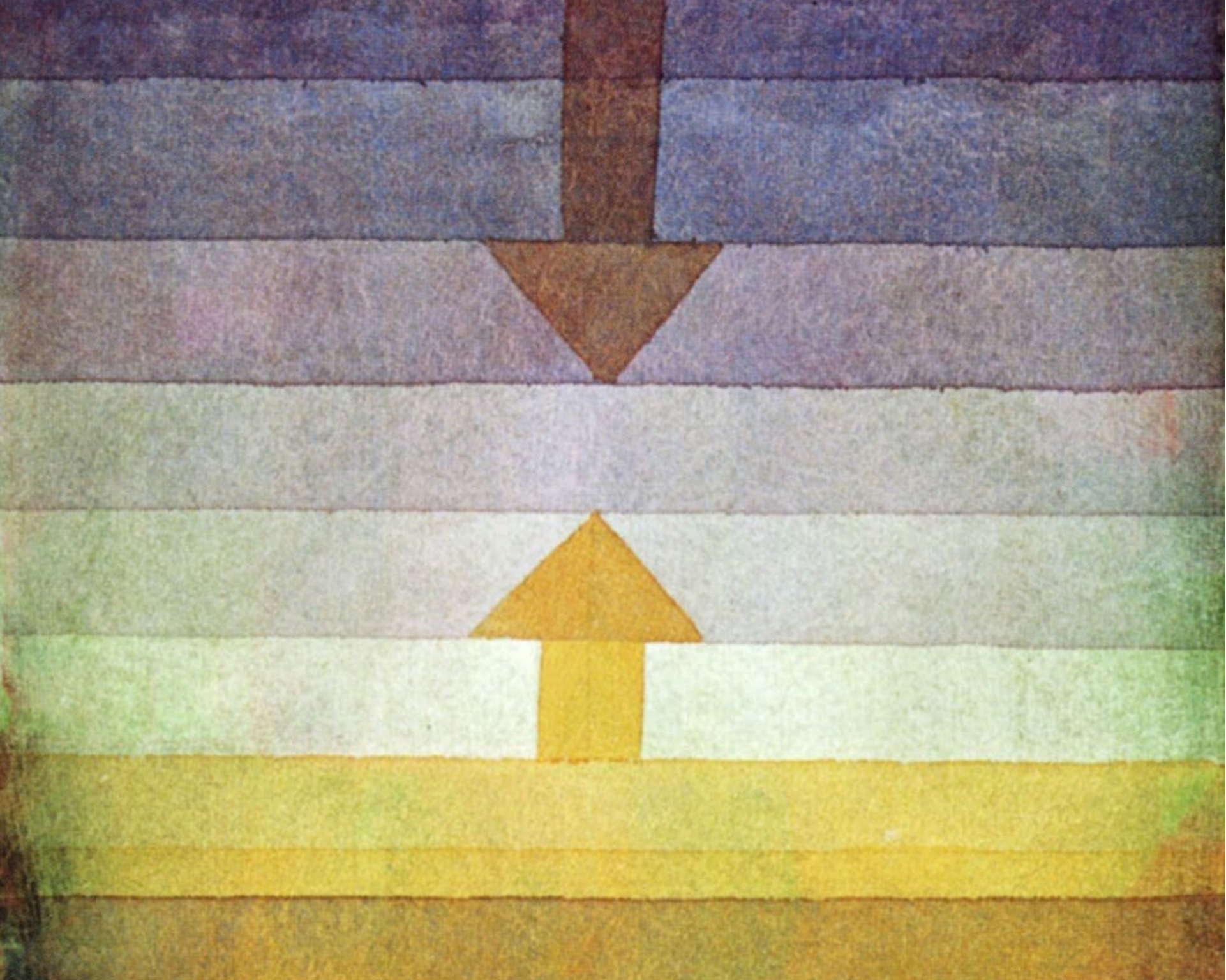
### LEAD SPONSOR



### SUPPORTING SPONSOR







SCHEIDUNG ABENDS, DETAIL (C.1922)  
**PAUL KLEE**  
PRIVATE COLLECTION

# CHALLENGE SESSION

## Diversity & Inclusion in the Resources Industry

**The production of mineral commodities is vital for our future world.**

Mining exists amidst communities. Inclusive and diverse communities and businesses are stronger and healthier, yet there has been limited engagement on how to create inclusion bridging communities and mines to advance economic and social progress.

This global dialogue seeks to catalyze new conversations about inclusion and diversity.

This DPI global dialogue will convene diverse and unexpected stakeholders, from within and outside of the industry, to explore how mining can partner with other sectors/industries and key stakeholders to catalyze inclusion that creates diverse, healthy and prosperous mines and communities.

**PARTICIPANTS INCLUDE:**

**CHICO TILLMON**  
Executive Director, Youth Safety and Violence Protection  
YMCA Chicago

**VERONICA NYHAN JONES**  
Global Head of Advisory Services Infrastructure and Natural Resources  
International Finance Corporation

**LANA EAGLE**  
Member of Whitecap Dakota First Nation  
Saskatchewan

**NAADIYA MOOSAJEE**  
Civil Engineer  
Co-Founder  
Womhub

**SHEILA KHAMA**  
Global Practice Manager Energy and Extractive Industries  
Global Practice  
The World Bank

**LIZ DOUGLAS**  
Head of Inclusion and Diversity  
Anglo American

**PAUL SCHMIDT SCHROTH**  
Human Resources  
Torex Gold

**LEAD SPONSOR**

**DEVELOPMENT  
PARTNER  
INSTITUTE**







DAY ONE | THE MERCHANDISE MART, CHICAGO

# SUMMIT AGENDA: TUESDAY, SEPTEMBER 25

**PRE-SESSIONS**

Participation confirmed in advance

**9:00 AM – 3:00 PM**

**CHALLENGE SESSIONS**

**Electric & Autonomous Vehicles**, easing the transition *Sponsored by Exelon*

**Automation & the Future of Work** *Sponsored by Willis Towers Watson*

**Diversity & Inclusion in the Global Resources Industry** *Hosted by DPI*

**3:00 PM – 3:30 PM**

**BREAK & TRANSITION**

**OFFICIAL OPENING OF TWIN GLOBAL 2018**

Marshall's Landing, The Merchandise Mart

**3:30 PM – 4:00 PM**

**WELCOME & OUR JOURNEY TOGETHER**

## What are Horizons and why should we care?

**Robert C. Wolcott**  
Co-Founder & Chairman  
TWIN

**Marshall Davis Jones**  
Spoken Word Artist

**Brian Collins**  
Founder & Chief Creative Officer  
COLLINS

**4:00 PM – 4:30 PM**

**OPENING KEYNOTE**

## Government at the Speed of Trust

**John Hickenlooper**  
Governor  
State of Colorado

Governor Hickenlooper has been a key part of our group for years, having initiated our affiliate, the Colorado Innovation Network (COIN), after his first visit with us in 2010. During his two terms as Mayor of Denver and two terms as Governor, John Hickenlooper has advanced new forms of engagement between public and private entities. More broadly, he'll address the fundamental issue of trust in our society.

**4:30 PM – 4:50 PM**

**BUSINESS & MISSION**

## Profit and Purpose: An Oxymoron?

**Todd Tillemans**  
President  
The Hershey Company

**Anne Black**  
President  
Goldman Sachs Gives  
Goldman Sachs

**INTERLOCUTOR**

**Peter Bryant**  
Managing Partner  
Clareo

**TWIN Co-Founder**

Horizons have to do with not only what we see, but what we aspire to create. TWIN co-founder Peter Bryant will lead a discussion with two executives at the forefront of this question for business and society.

**4:50 PM – 5:15 PM**

**MISSION**

## Our Future from the Ends of the Earth

**Barney Swan**  
Polar Explorer  
2041

**Robert Swan, OBE**  
Polar Explorer  
2041

Polar explorer Robert Swan returned for a walk to the South Pole this year, this time with his son, Barney. They walked from the coast to the Pole supported entirely by renewable energy. As go the poles, so goes the planet.

**5:15 PM – 6:00 PM**

**SHARE YOUR VISION, CHANGE OUR WORLD.**

**6:00 PM – 8:00 PM**

**RECEPTION & DINNER**

GARDEN OF EARTHLY DELIGHTS (C. 1480-1505)  
**HIERONYMUS BOSCH**  
MUSEO DEL PRADO  
MADRID

**8:00 PM – 9:00 PM**

## HORIZONS: OUT OF THIS WORLD SPACE!

**Barbara Belvisi**  
Entrepreneur and Venture Investor  
Founder  
The Hardware Club  
(France)

**Dorit Donoviel**  
Associate Professor & Director  
Translational Research Institute for Space Health (TRISH)  
Baylor College of Medicine

NASA funded research consortium with CalTech & MIT

**Naveen Jain**  
Serial Entrepreneur

**Space Investor**

**Board Member**  
X Prize & Singularity University

**Dante Lauretta**  
Principal Investigator  
NASA's OSIRIS-REX Asteroid Mission

**Professor of Planetary Science**  
University of Arizona

**9:00 PM – JE NE SAIS PAS**

**TWIN AFTER HOURS**

Join fellow TWINians for cocktails, conversation and who knows what else at our event hotel bar, the Hyatt Centric, or explore Chicago's wide nightlife horizons—but be ready to re-engage at 8:30 am!







DAY TWO | MCA AUDITORIUM

WEDNESDAY, SEPTEMBER 26

Horizons: Global Constellations

8:30 AM – 8:40 AM

DAY TWO WELCOME & REFLECTIONS

8:40 AM – 9:10 AM

TRIALOGUE

The EU and US relationship represents one of the world's pivotal alliances. Meanwhile, geopolitical challenges from national politics to the Russian Federation's renewed active engagement in global affairs require adjustment and evolution. Esko Aho and Grzegorz Kołodko have played pivotal roles for years in the midst of shifting European horizons. Their interlocutor, Sam Potolicchio, leads elite public affairs programs in the US and Russia.

**Esko Aho**  
Prime Minister (1991–1995)  
Republic of Finland

**Grzegorz Kołodko**  
Distinguished Professor of Economics  
Kozminski University

**Deputy Prime Minister and Finance Minister**  
(1994–1997, 2002–2003)  
Republic of Poland

INTERLOCUTOR

**Sam Potolicchio**  
McCourt School of Public Policy  
Georgetown University

**Distinguished Professor of Political Communications**  
Russian Presidential Academy  
(US and Russia)

9:10 AM – 9:30 AM

THE VIEW FROM CHINA

Innovation in China: Rise & Transform

**Haisong Tang**  
Innovation Advisory Board  
Kering  
(China & France)

9:30 AM – 10:00 AM

A STAR RISES

Bangladesh: Vision 2030 and Beyond

**Sayed Ferhat Anwar**  
Professor, Institute of Business Administration  
University of Dhaka

**Anir Chowdhury**  
Policy Advisor to the Prime Minister  
People's Republic of Bangladesh

**Munawar Misbah Moin**  
Group Director  
RahimaFrooz  
(Bangladesh)

**Mamun Rashid**  
Managing Partner  
PWC Bangladesh

**Former CEO**  
Citibank Bangladesh

RED JASPER AMULET OF THE SUN ON THE HORIZON (664-630 B.C.)  
EGYPTION, LATE DYNASTIC-HELLENISTIC  
METROPOLITAN MUSEUM OF ART  
NEW YORK CITY

10:00 AM – 10:20 AM

HORIZONS... ACROSS DIVIDES

Birds of Peace

**Yossi Leshem**  
Professor of Ornithology  
George S. Wise Faculty of Life Sciences  
School of Zoology  
Tel Aviv University (Israel)

**Alexandre Roulin**  
Professor  
Department of Ecology & Evolution  
University of Lausanne (Switzerland)

Finding new paths to peace. Yossi Leshem and Alexandre Roulin will share one of the most distinctive and impactful initiatives to bring understanding to a complicated region—with barn owls.

10:20 AM – 10:40 AM

BREAK

Digital Horizons: Enterprise & Society

10:40 AM – 11:10 AM

DIGITAL HORIZONS: ENTERPRISE  
Incumbents Strike Back

**Emmet Keeffe III**  
Partner & Founder  
Insight Ignite  
Insight Venture Partners

**Jesus Mantas**  
Managing Partner, Cognitive Assets and BGS Ventures  
Head of Strategy, Global Business Services, IBM

**Toby Redshaw**  
SVP, 5G Ecosystems, Innovation and Product Development  
Verizon

TWIN Co-Founder

MODERATOR

**Mohan Sawhney**  
McCormick Foundation Chair of Technology  
Clinical Professor of Marketing  
Kellogg School of Management  
Northwestern University

The simplistic version of innovation is that the startups defeat the incumbents. Reality is more nuanced. How can incumbents thrive through transitions to digital leadership? **Special thanks to IBM** for their support of this topic.

11:10 AM – 11:30 AM

DIGITAL HORIZONS: SOCIETY

Automation & the Future of Work

**Gary Bolles**  
Chair for the Future of Work  
Singularity University

**Partner**, Charrette LLC

**John Bremen**  
Managing Director  
Willis Towers Watson

**Ravin Jesuthasan**  
Managing Director  
Willis Towers Watson





SUMMIT AGENDA: WEDNESDAY, SEPTEMBER 26

**Stephanie Pace Marshall**  
Founding President Emerita  
Illinois Math and Science Academy

INTERLOCUTOR

**Chris Gebhardt**  
CEO  
Stir Strategy

11:30 AM – 12:00 PM

SOLUTIONS FOR  
TRANSFORMATIVE CHANGE

**Glen Weyl**  
Senior Researcher  
Microsoft Research

**Co-Author**  
*Radical Markets*

**Andrew Yang**  
Presidential Candidate, 2020  
Silicon Valley Entrepreneur

MODERATOR

**David Kirkpatrick**  
Founder & Editor-in-Chief  
Techonomy

As automation threatens to displace jobs and trust in institutions—even the foundations of our democracy—descends, courageous individuals seek new solutions.

12:00 PM – 12:20 PM

HORIZONS OF LIFE

Artificial Life:  
In Our Lifetimes

**Steen Rasmussen**  
Professor of Physics

**Director, Center for Fundamental Living Technology (FLinT)**  
University of Southern Denmark

**External Research Professor**  
Santa Fe Institute  
(Denmark)

**Kristina Korsholm**  
Actor, Author & Online Show Host  
(Denmark)

Steen Rasmussen is one of the world's pioneers in artificial life, applying materials and information technology to generate living, evolving entities. It's closer to reality than you might think, and Steen and his daughter, Kristina Korsholm, explore what this might mean for how we live and understand our lives.

12:20 PM – 12:30 PM

ONWARD!

**Robert C. Wolcott**  
Co-Founder & Chairman  
TWIN

12:30 PM – 2:00 PM

LUNCH

CONCURRENT  
BREAKOUT SESSIONS

Track One:  
MAKING TECHNOLOGY WORK

Location:  
CROWN FAMILY ROOM

2:00 PM – 3:15 PM

Making AI Work  
for Business—  
and Human Beings

*Sponsored by:*  
*Northern Trust Corporation*

Join a panel of researchers and business leaders in the middle of understanding how AI can best apply to enhancing our businesses and lives—and how we might change in the process.

**Larry Birnbaum**  
Professor of Electrical Engineering & Computer Science  
Northwestern University

**Moran Cerf**  
Assistant Professor of Neuroscience & Marketing  
Kellogg School of Management  
Northwestern University

**Jesus Mantas**  
Managing Partner, Cognitive Assets and BGS Ventures

**Global Head of Strategy, Global Business Services**  
IBM

**Toby Redshaw**  
SVP, 5G Ecosystems, Innovation and Product Development  
Verizon

**Tom South**  
Head of Technology Solutions  
Northern Trust Corporation

**Elizabeth Spenko**  
Senior Vice President, Director of The Northern Lab  
Northern Trust Corporation

MODERATOR

**David Kirkpatrick**  
Founder & Editor-in-Chief  
Techonomy

3:15 PM – 3:45 PM

BREAK

3:45 PM – 5:00 PM

The Doctor of  
the Future

*Sponsored by:*  
*Alcon & Surgivision*

From AI, computer vision and additive manufacturing to evolving definitions of wellness, the role of physicians and care-givers will change markedly in the future.

**Archelle Georgiou, M.D.**  
KSTP-TV

Health Expert

President, Georgiou Consulting

Board Member, Tivity Health

WEDNESDAY, SEPTEMBER 26

**Sam Glassenberg**  
Founder & CEO  
Level Ex

**Alex Hurd**  
Senior Director, Wellness  
Walmart

**Guy Kezirian, M.D.**  
Founder & CEO  
Surgivision

**Board Member**  
Cure Blindness

**Geoffrey Ling, M.D., Ph.D.**  
Professor of Neurology and Attending Physician  
Johns Hopkins University

**CEO**  
Ling and Associates

**Former Director, Biological Technologies Office**  
DARPA

MODERATOR

**Lee Shapiro**  
Partner  
7wire Ventures

TWIN Co-Founder

CONCURRENT  
BREAKOUT SESSIONS

Track Two:  
HORIZONS OF GLOBAL DEVELOPMENT

Location:  
THIRD FLOOR BOARD ROOM

2:00 PM – 3:15 PM

Investing in  
Sub-Saharan Africa:  
Frontiers of Growth

In addition to being the largest continent by landmass, Africa also includes a broad array of nations, cultures, economic and government systems. Join experts building growth opportunities across the continent.

**Euler Bropleh**  
Managing Director  
VestedWorld (Kenya and USA)

**Karim Shariff**  
Founder & Managing Partner  
Majlis Investment Management  
(United Arab Emirates)

**Kimmie Weeks**  
Founder & CEO  
Youth Action International (Liberia)

MODERATOR

**Wendy Tyrrell**  
Executive Director  
Development Partner Institute

3:15 PM – 3:45 PM

BREAK

Location:  
THIRD FLOOR BOARD ROOM

3:45 PM – 5:00 PM

Nourishing the  
World: Exponential  
Challenges, Exponential  
Technologies

*Sponsored by:*  
*Daabon and Griffith Foods*

**Jack Bobo**  
Vice President, Global Policy & Government Affairs  
Intrexon

**Senior Advisor, Global Food Policy (2002–2015)**  
US Department of State

**Diana Horvath**  
President & Co-Founder  
2Blades Foundation

**John Power**  
President & Senior Advisor  
LSC International

MODERATOR

**Scott Bowman**  
Managing Partner  
Clareo

CONCURRENT  
BREAKOUT SESSIONS

Track Three:

2:00 PM – 6:00 PM

Synchronicity Tent

While others deep-dive into breakout sessions, spend time with fellow delegates in our Synchronicity Tent, just outside the MCA's back door. As we say—never leave serendipity to chance!

6:00 PM – 7:45 PM

RECEPTION & DINNER

Join us for a casual, no-program dinner... where the real magic happens. Make sure you sit with some TWINians whom you haven't met.

7:45 PM – 8:00 PM

TRANSITION TO MCA AUDITORIUM

8:00 PM – 9:30 PM

ETUDES FOR INNOVATION, OPUS 10

9:30 PM – 11:30 PM

TWIN GLOBAL AFTER HOURS

Join us for cocktails and conversations, and enjoy the MCA's collection, open exclusively for us this evening. (Please do not take drinks into galleries.)





SUMMIT AGENDA: THURSDAY, SEPTEMBER 27

Our Lives in Emerging Horizons

8:45 AM – 9:00 AM

CREATING VIRTUAL EXPERIENCES

David Wallace Haskins  
VR Artist  
DWH Studio

9:00 AM – 9:30 AM

HORIZONS OF PURPOSE

Philip Kotler  
SC Johnson Professor of Global Marketing  
Kellogg School of Management  
Northwestern University

Harry Kraemer  
Executive Partner  
Madison Dearborn Partners

Clinical Professor of Leadership  
Kellogg School of Management

Denise Young Smith  
Executive-in-Residence  
Cornell Tech

Former SVP for Talent  
Apple

INTERLOCUTOR

Robert C. Wolcott  
Co-Founder & Chairman  
TWIN

We're blessed to be joined by three of the world's most purposeful, values-driven leaders. Phil Kotler, a founder of the field of modern marketing, and Harry Kraemer, former CEO of Baxter and an Executive Partner with one of America's largest private equity organizations, have been with TWIN for years. Welcome Denise Young Smith, formerly worldwide head of talent for Apple.

9:30 AM – 9:50 AM

VIEW FROM THE LABS

Marcus Weldon  
President  
Bell Labs

CTO  
Nokia

Some of the seminal discoveries and inventions of the computer age arose from Bell Labs. Today part of Nokia, CTO Marcus Weldon will share some of the astounding new directions underway. Special thanks to Nokia Bell Labs for their support throughout TWIN Global 2018.

9:50 AM – 10:10 AM

HORIZONS: WELLNESS & PERFORMANCE

Andreas Caduff  
CEO  
Biovotion AG  
(Switzerland)

Brad Chedister  
Warfighter Systems Architect  
The Charles Stark Draper Laboratory

From real-time health monitoring to cybernetic enhancements. Being human will never be the same.

10:10 AM – 10:25 AM

FROM DARPA TO LIFE

Geoffrey Ling  
Professor of Neurology and Attending Physician  
Johns Hopkins University

CEO  
Ling and Associates

Geoffrey Ling led the US Defense Advanced Research Projects Agency's (DARPA) efforts in Biological Technologies. Since then, Dr. Ling has been taking transformative technologies to market. He'll share technologies with the potential to fundamentally change the entire pharmaceutical industry—and how we address public health challenges and disasters.

10:25 AM – 10:40 AM

DESIGNING THE FUTURE

Martin Wezowski  
Chief Designer & Futurist  
SAP  
(Germany)

Martin Wezowski not only explores the future for SAP and their clients, but also considers how design can help us create the futures we desire.

10:40 AM – 11:00 AM

BREAK

THURSDAY, SEPTEMBER 27

Post-Virtual Horizons: Art & Life, Life As Art

11:00 AM – 11:30 AM

VR+... AND BEYOND

Rosario Casas  
Founder & CEO  
VR Americas  
(Colombia)

Julian Dibbell  
Mayer Brown LLP

Former Contributing Editor  
Wired

Sam Glassenberg  
CEO & Founder  
Level Ex

Julian Dibbell followed developments in technology and society for Wired Magazine for years. He'll help us put current VR+ developments into context. Sam Glassenberg and Rosario Casas are bringing VR+ technologies to the worlds of entertainment, gaming, healthcare and beyond.

11:30 AM – 11:50 AM

HORIZONS OF ART & LIFE

Peter Boris  
Executive Vice President  
PACE Gallery

Parmenides, Heraclitus and Contemporary Art

Peter Boris has spent his career discovering and advocating for contemporary art. Peter will share some thoughts about where the visual arts might be going, how technology changes the game—and what will likely remain constant.

11:50 AM – 12:20 PM

TOWARD OUR POST-VIRTUAL WORLD

Moran Cerf  
Neuroscientist

Assistant Professor of Neuroscience & Marketing  
Kellogg School of Management  
Northwestern University

Founder  
B3

Lone Frank  
Science Writer  
Weekendviesen

Author  
Pleasure Shock & My Beautiful Genome  
(Denmark)

Michael Schrage  
Research Fellow  
MIT Initiative on the Digital Economy  
Visiting Fellow, Imperial College (UK)

MODERATOR

Robert C. Wolcott  
Co-Founder & Chairman  
TWIN

12:20 PM – 12:40 PM

TO THE EIGHTH CONTINENT

The Moon, Our Future on Earth... and Beyond

Bob Richards  
CEO  
Moon Express

12:40 PM – 1:00 PM

TO THE FUTURE...

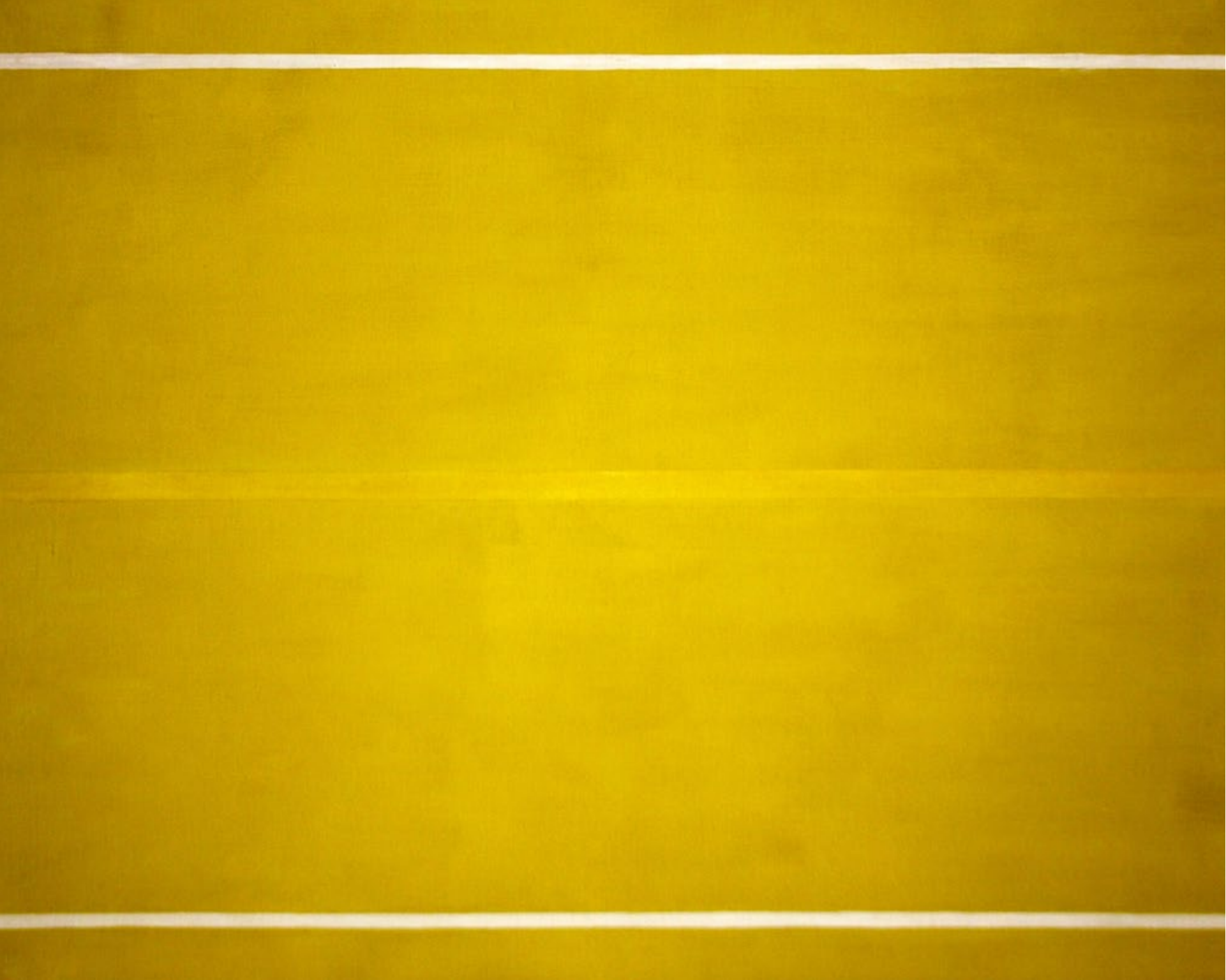
Marshall Davis Jones  
Spoken Word Artist

Robert C. Wolcott  
Co-Founder & Chairman  
TWIN

Following TWIN Global, join us for the VIP Opening of EXPO, Chicago's annual international contemporary art show. A light lunch will be included at the EXPO.







YELLOW PAINTING (1949), 90° ROTATED IMAGE  
**BARNETT NEWMAN**  
THE NATIONAL GALLERY OF ART  
WASHINGTON, D.C.

# ETUDES FOR INNOVATION, OPUS 10

Co-hosted by Rob Wolcott and  
TWIN Creative Director Jeffrey Ernstoff

As the annual arts component of TWIN Global, *Etudes for Innovation* is a 90-minute informance showcasing innovative performing artists, technology and aesthetic theories—all to inform our thinking in areas beyond the arts. As in previous editions that have presented many Emmy, Grammy, and Tony nominees and winners, Etudes Opus 10 will feature outstanding international solo and ensemble performers, drawn from the worlds of state-of-the-art technology, jazz, contemporary and innovative classical compositions, socio-aesthetic perspectives and more.

LIST OF PERFORMERS:

**ROB THE DRUMMER**

**YUMI KUROSAWA**  
(koto)

**JEFFREY ERNSTOFF**  
(woodwinds)

**THE MATTHEW WHITAKER TRIO**  
**Matthew Whitaker** (keyboards)  
**Sipho Kunene** (drums)  
**Ted Morcaldi III** (guitars)

**RONAN TYNAN**  
(tenor)  
with **Bill Lewis** (piano accompanist)

*And other special guests*







LADDER (WATER TOWER), 2014  
IVAN NAVARRO  
GALLERY  
LOCATION

**“Invention, it must be humbly admitted,  
does not consist in creating out of void  
but out of chaos.”**

—Mary Wollstonecraft Shelley





TRY TO SECURE  
LARGER IMAGE?



FLOWERS AND PEOPLE, CANNOT BE CONTROLLED BUT  
LIVE TOGETHER—A WHOLE YEAR PER HOUR (2015)  
**TEAMLAB**  
COURTESY PACE GALLERY

# TWIN TEAM



**ROBERT C. WOLCOTT**  
Executive Producer & Host  
Co-Founder & Chairman  
TWIN



**JENNIFER ANDRADE**  
Co-Producer  
TWIN Global 2018



**JEFFREY ERNSTOFF**  
Creative Director  
TWIN Global 2018



**BRIAN STEVENS**  
Director  
Audio Visual Production



**BRYAN CAMPEN**  
Director  
Communications



**HEATHER CROSBY**  
Director  
Art & Design



**ARI GARBER**  
Director  
Operations



**VERONICA BECKMAN**  
Speaker Logistics



**ESTHER LI**  
Event Coordinator



**SONIA COMAN**  
Curator  
TWIN Global 2018 GuideBox







NOCTURNE: BLUE AND SILVER (C. 1871)  
JAMES ABBOTT MCNEILL WHISTLER  
TATE  
UNITED KINGDOM

“Vision is the art of seeing  
what is invisible to others.”

— Jonathan Swift







VIEW OF EARTH RISING OVER MOON'S HORIZON  
TAKEN FROM APOLLO 11 SPACECRAFT (1969)  
NASA

# ABOUT TWIN

**The World Innovation Network (TWIN) is a ‘network of networks’ for on-going collaboration across sectors and geographies.**

Founded in 2003, TWIN promotes trust and innovation-led growth for our corporate, non-profit and government members, and value for society-at-large.

Through our pillars—Community, Discovery, Synchronicity, Impact—we enable our network from over 25 countries to advance their missions and our shared global prosperity agenda.

**YOUR HOST:**

**ROBERT C. WOLCOTT**  
Executive Producer & Host  
Co-Founder & Chairman  
TWIN







UNCERTAIN HORIZON, 2018  
**DAVID WALLACE HASKINS**  
ARCHITECTURE OF LIGHT SERIES  
ELMHURST ART MUSEUM

# ABOUT THE TWIN GLOBAL 2018 GUIDEBOX

We conceived this collection of images as a meditation on how artists from different cultures and time periods have engaged with horizons as notions and/or visual motifs. From representations of horizons in seascapes to metaphorical horizons in self-portraits, the selected images use this theme to highlight the inventiveness that characterizes their making and thereby the artist's identity. In their effective combination of message and medium, the GuideBox images are also an invitation to TWIN Global delegates to reflect on how to discover and explore their own horizons.

**Sonia Coman, Ph.D.**  
*Curator*  
TWIN Global 2018 GuideBox

*Fellow*  
Smithsonian Institution

**SONIA COMAN**  
Co-Curator

**ROBERT C. WOLCOTT**  
Co-Curator

**HEATHER CROSBY**  
Design

**JENNIFER ANDRADE**  
Producer

**DEBBIE PAGE**  
Production

Special thanks to **Tony Karman of EXPO Chicago** and **Peter Boris of Pace Gallery** for the opportunity to feature some of the world's most exceptional living artists.

